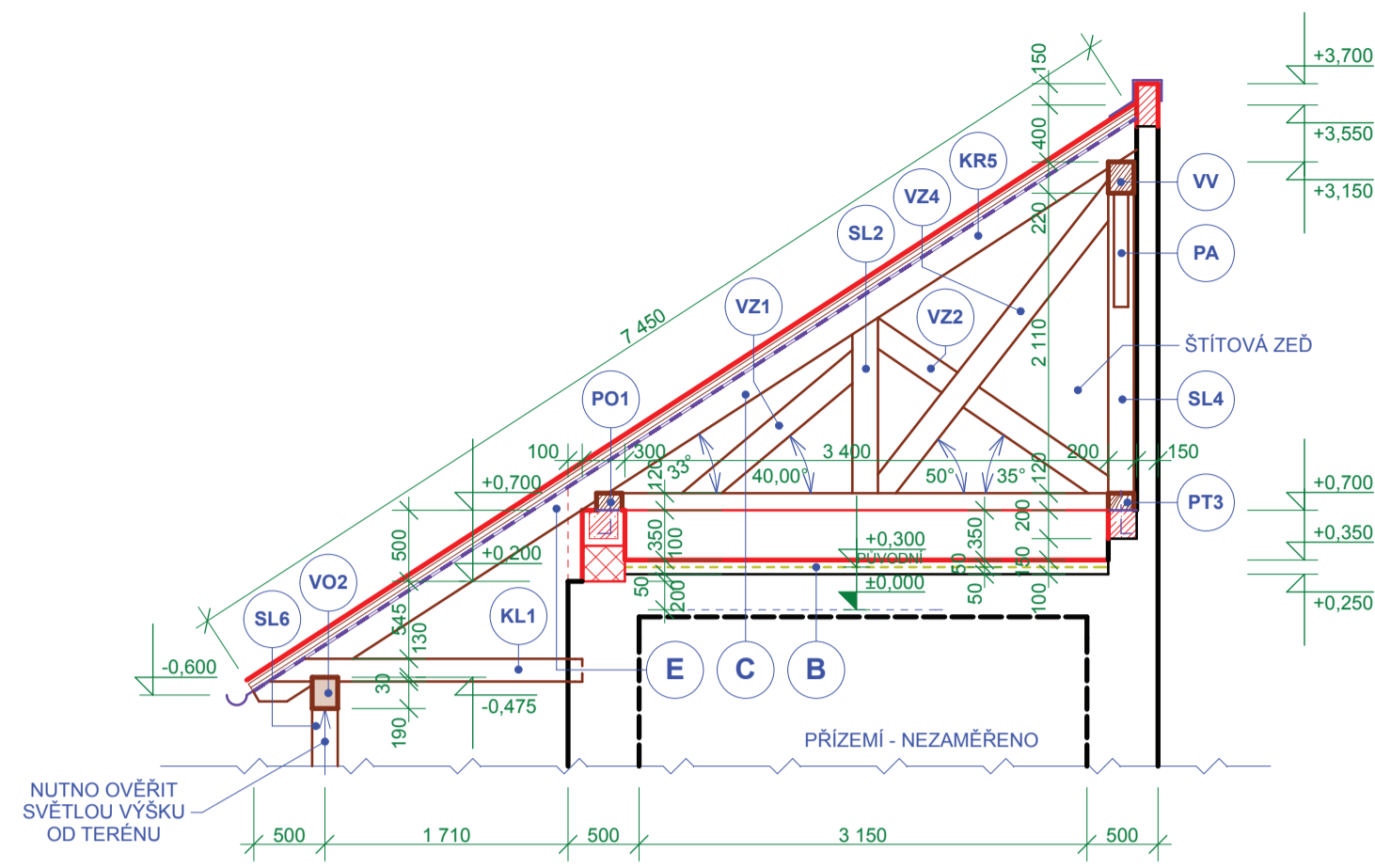


ŘEZ C



VÝPIS PRVKŮ KROVU

Table listing roof components (KR1-KR6, VY, KL1-KL4, PA, RO, VZ1-VZ5, PT1-PT3, VV, VS1-VS2, VO1-VO2, PO1-PO3, SL1-SL6) with columns for quantity, dimensions, and volume.

LEGENDA MATERIÁLŮ

- Legend for materials including roof tiles (YTONG), rafters (DREVO HRANĚNÉ), insulation (CHLÉNĚNÉ DOZDÍVKY), and floor slabs (BETON PROSTÝ).

PRŮVLAKY, VĚNCE, STROPY, ŽÁKLADY

- Legend for structural elements including rafters (TRAPÉZ PLECH 35 + ŽB), beams (VALCOVANÝ PROFIL I 120), and columns (SLOUP).

POZNÁMKA

- Notes regarding construction details for the roof structure, including instructions for rafters, beams, and insulation.

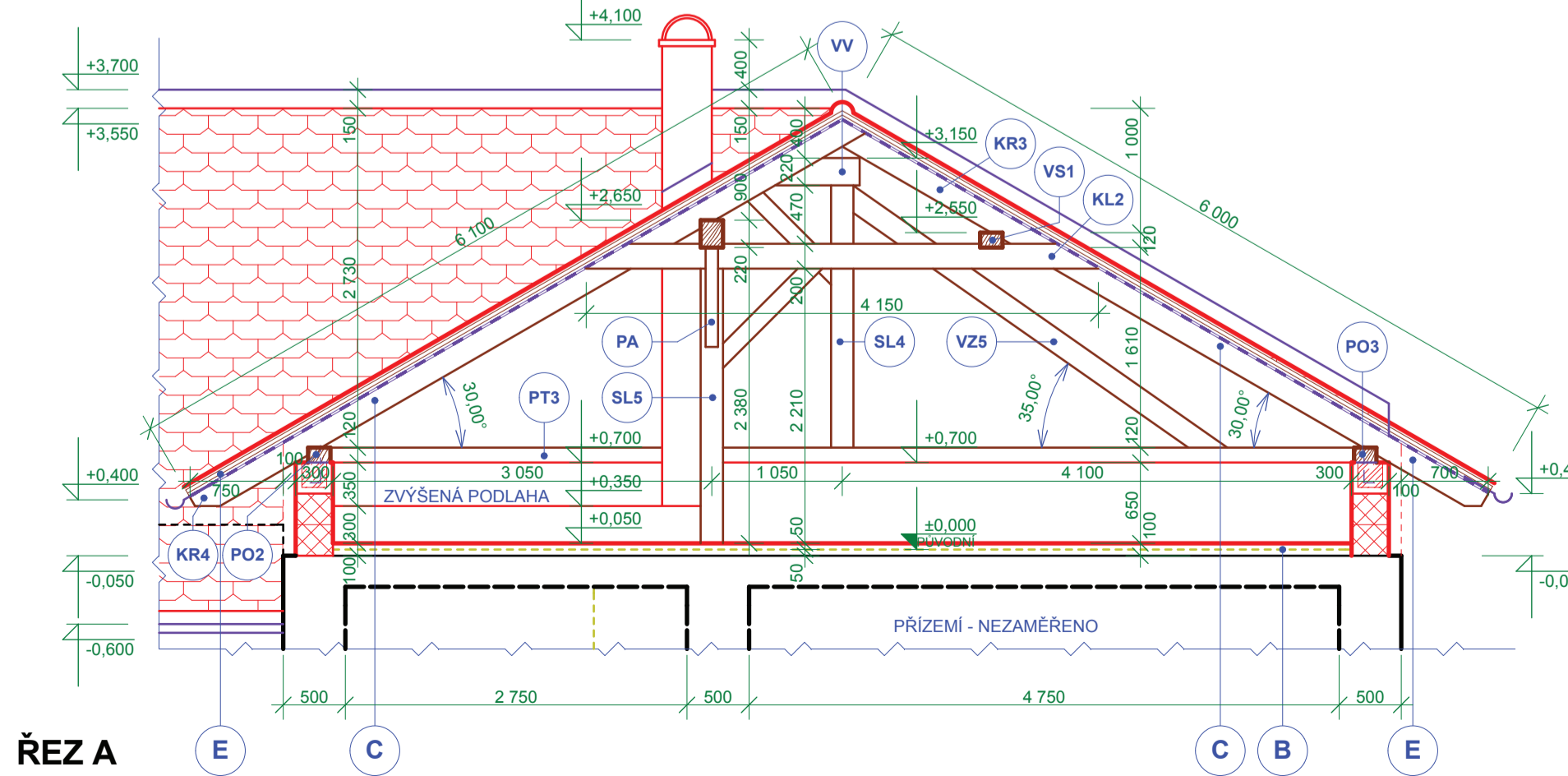
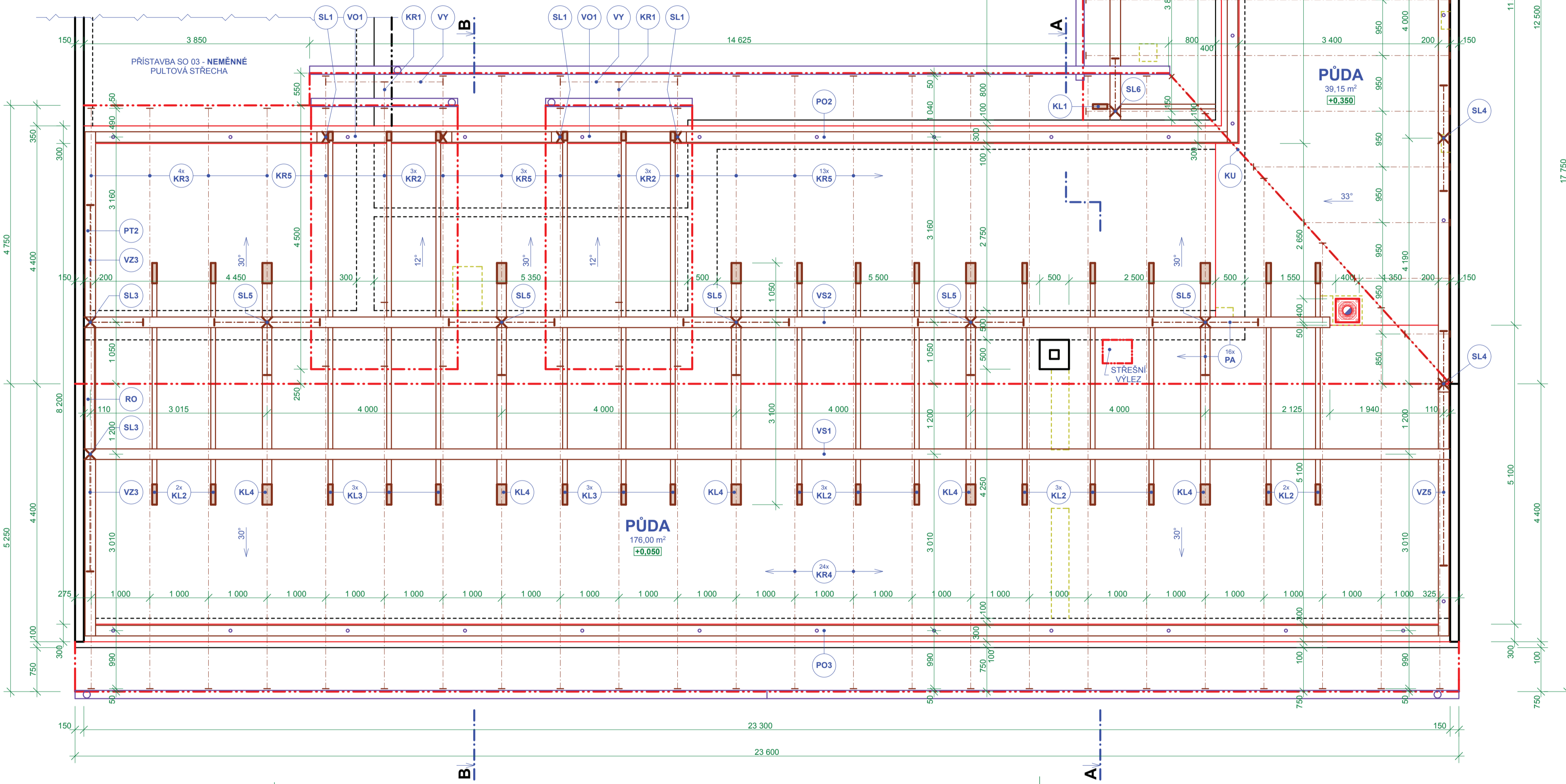
- Notes regarding roof construction details, including instructions for roof tiles, rafters, and beams.

- Notes regarding roof construction details, including instructions for rafters, beams, and insulation.

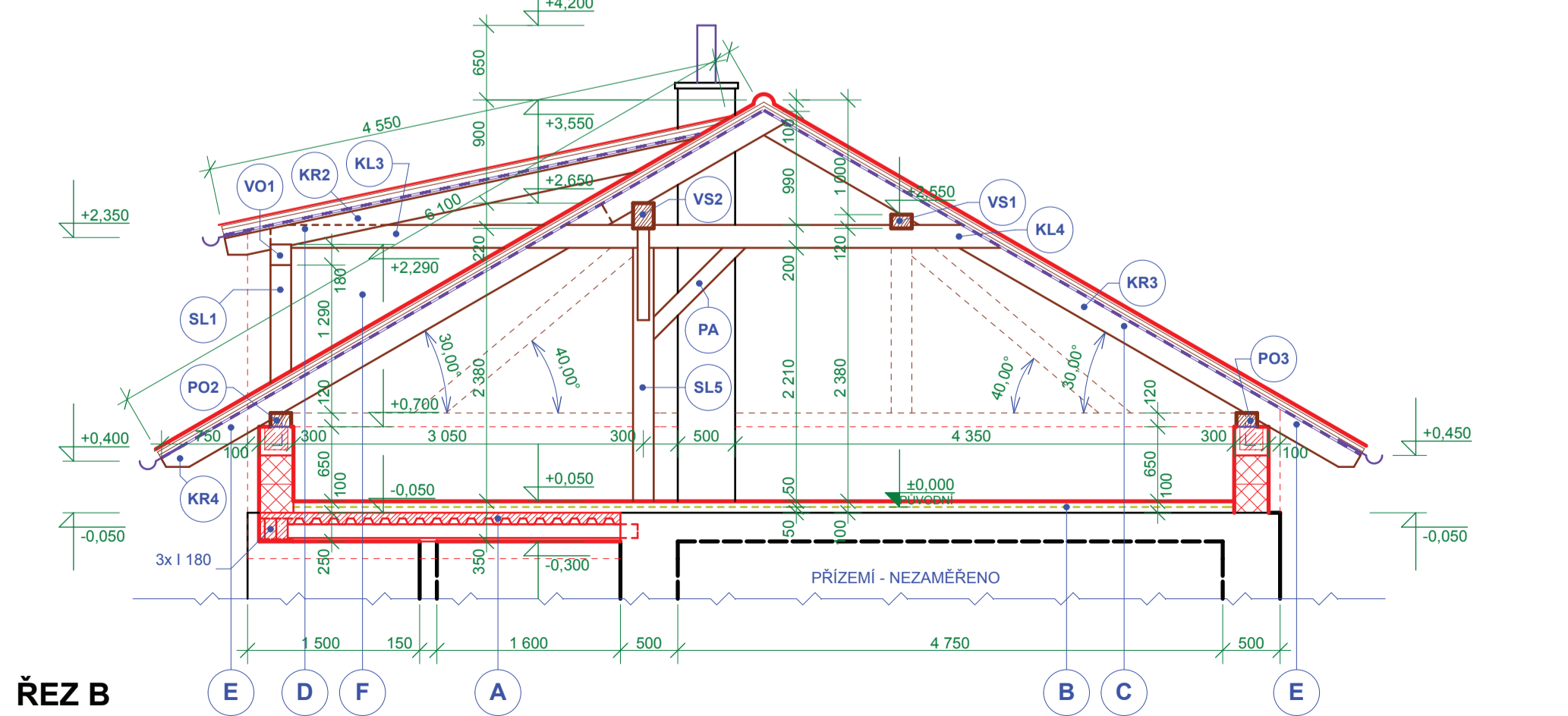
- Notes regarding roof construction details, including instructions for rafters, beams, and insulation.

INFORMACE

- Information regarding the project, including details about the roof structure, construction methods, and materials.

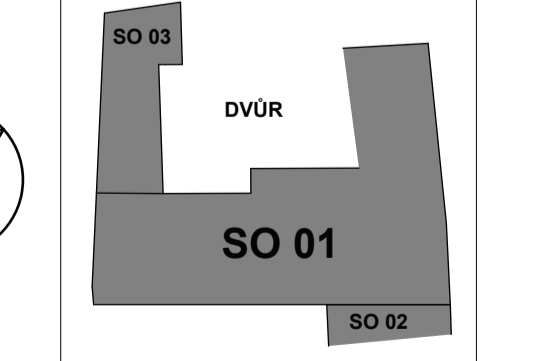


ŘEZ A



ŘEZ B

SCHEMA 1NP 1:500



Project information block including title '±0,000 = STÁV. PŮDA', project details, and contact information for the design firm.